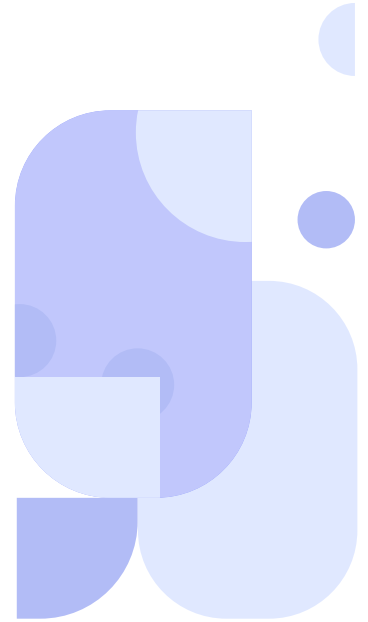
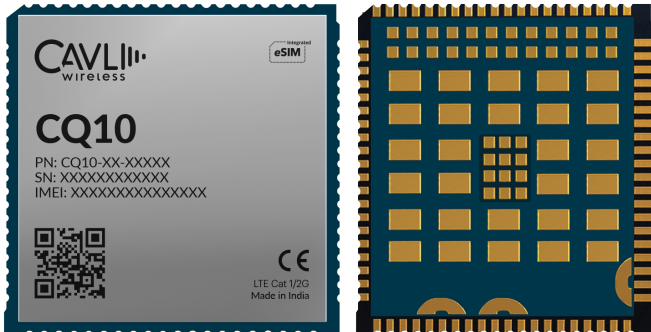


# CQ10



Cavli  
C Series



## Overview

CQ10 is an LTE Cat 1 module with 2G fall back supporting 3GPP release 10 standards, design for IoT and M2M applications. Engineered in LCC+LGA form factor, it delivers a maximum data rate of 10 Mbit/s DL & 5 Mbit/s UL. CQ10 supports in-built GNSS powered by Qualcomm® Location Suite Gen8C Lite (GPS, GLONASS, BeiDou, Galileo and QZSS), ensuring precise positioning. Additionally, it supports VoLTE and SMS over IMS/SG/CS and a wide variety of Internet protocols and industry-standard hardware interfaces.

The module comes in multiple regional variants and CQ10-WW for worldwide deployments. Featuring an optional integrated eSIM powered by Cavli Hubble platform, the module provides seamless global connectivity and wide coverage which helps to reduce the time to market. CQ10 is tailored for IoT and M2M applications, such as asset tracking, automotive, e-mobility, data loggers, fleet management, environmental monitoring and much more.

## Key Highlights



LTE Cat 1



In-built GNSS



Integrated eSIM<sup>1</sup>



Cavli Hubble Platform



VoLTE Support



SMS over IMS/SG/CS



2G Fallback



USB 2.0 Interface

# Basic Module Information

## Basic Specification

Processor: ARM Cortex-A7 upto 1.3 GHz	
RAM:	256 MB
Flash:	256 MB / 512 MB
OS:	Yocto Linux (Kernel 4.14)

## LTE Bands

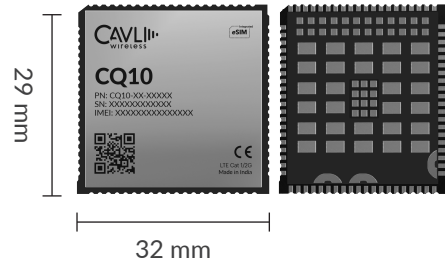
EU:	B1/ B3/ B5/ B8/ B20/ B40
NA:	B2/ B4/ B5/ B12/ B13 /B25/ B26/ B66
WW:	B1/ B3/ B4/ B5/ B7/ B8/ B12/ B13/ B18/ B19/ B20/ B25/ B26/ B40

## GSM Bands

EU:	900 /1800 MHz
NA:	900 /1800 MHz
WW:	900 /1800 MHz

## Interfaces

UART	x3
USB 2.0 (HS)	x1
HSIC	x1
WLAN/BT (External)	x1
USIM (1.8V / 2.85V)	x1
SDC	x2
Network Status Indicator	x2
Power ON Status Indicator	x1
SGMII	x1
I2C <sup>2</sup>	x1
ADC	x2
PCM <sup>2</sup>	x1
Main ANT	x1
Diversity ANT	x1
GNSS ANT	x1
JTAG	x1



## Packaging

Form Factor:	LCC + LGA
Dimensions:	32x 29 x TBD (mm scale)
Pin Count:	144 Pins

## Radio Technology

RAT Used:	LTE Cat 1 with 2G
3GPP Release:	10

## Network Speed (Peak Values)

LTE Cat 1:	DL 10Mbps & UL 5 Mbps
GSM:	DL 236.8Kbps & UL 236.8 Kbps

## Constellation Coverage

GPS/GLO/GAL/BDS with QZSS
Qualcomm Location Suite Gen8C Lite

## Temperature Range

Operating Temperature:	-30 °C to 85 °C
------------------------	-----------------

## Power Characteristics

Voltage Range:	3.6 V to 4.5 V
Typical Voltage:	3.8 V

## Internet Protocols

TCP(S), HTTP(S), MQTT(S), FTP(S), UDP
---------------------------------------

<sup>1</sup> Optional

<sup>2</sup> Needs SDK